

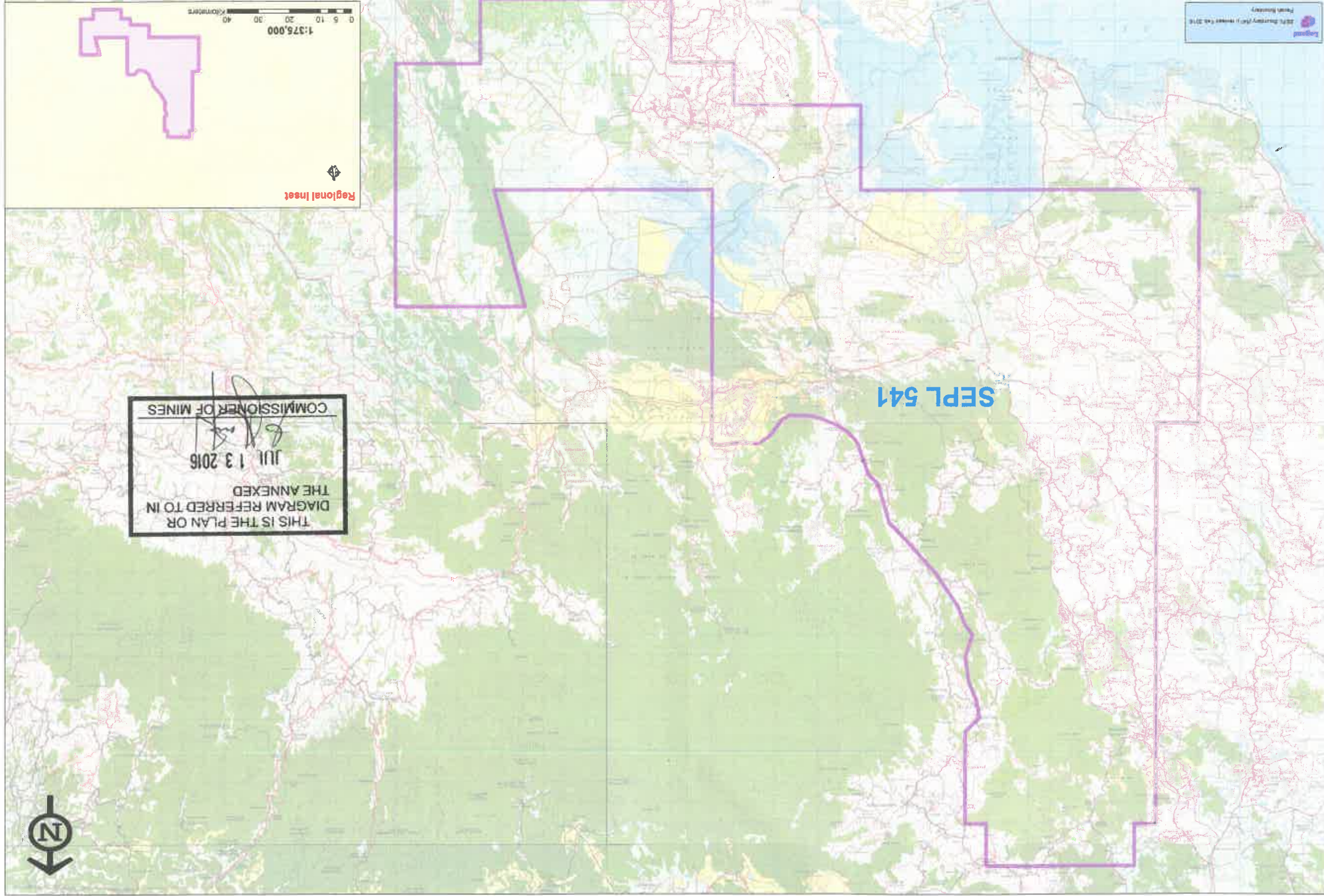


Inspectorate Unit
 Mines and Geology Division
 Ministry of Transport and Mining
 Created on 6 July 2016
 Created By: Richan Henry

SEPL - Special Exclusive Prospecting Licence

Boundary and Extent of SEPL 541 (July 2016): Spanning Westmoreland, St. James, St. Elizabeth and Manchester

1:50,000
 0 2 4 8 Kilometers



1:375,000
 0 5 10 20 30 40 Kilometers

Regional Inset

THIS IS THE PLAN OR
 DIAGRAM REFERRED TO IN
 THE ANNEXED
 JUL 13 2016
 [Signature]
 COMMISSIONER OF MINES

